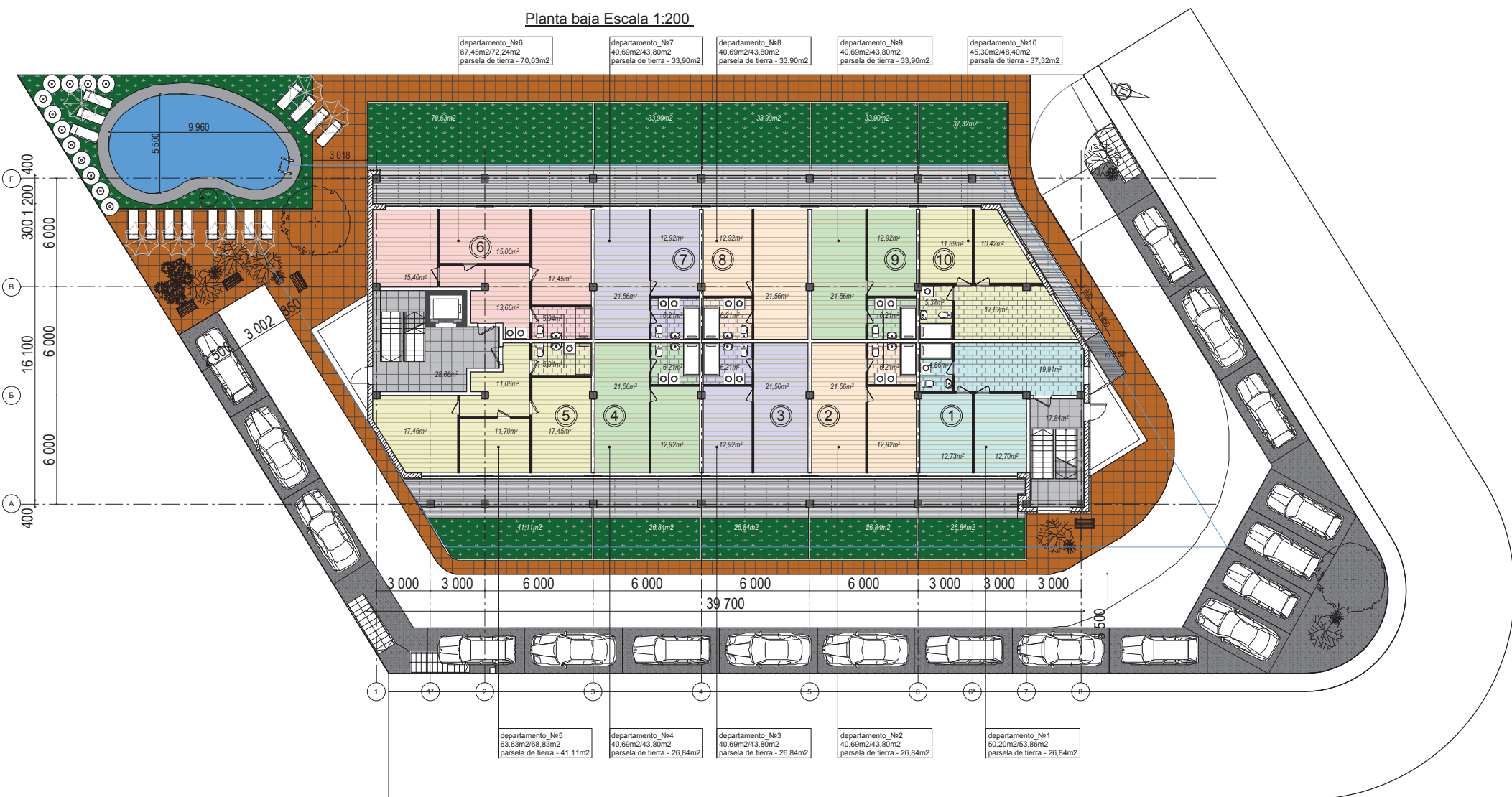


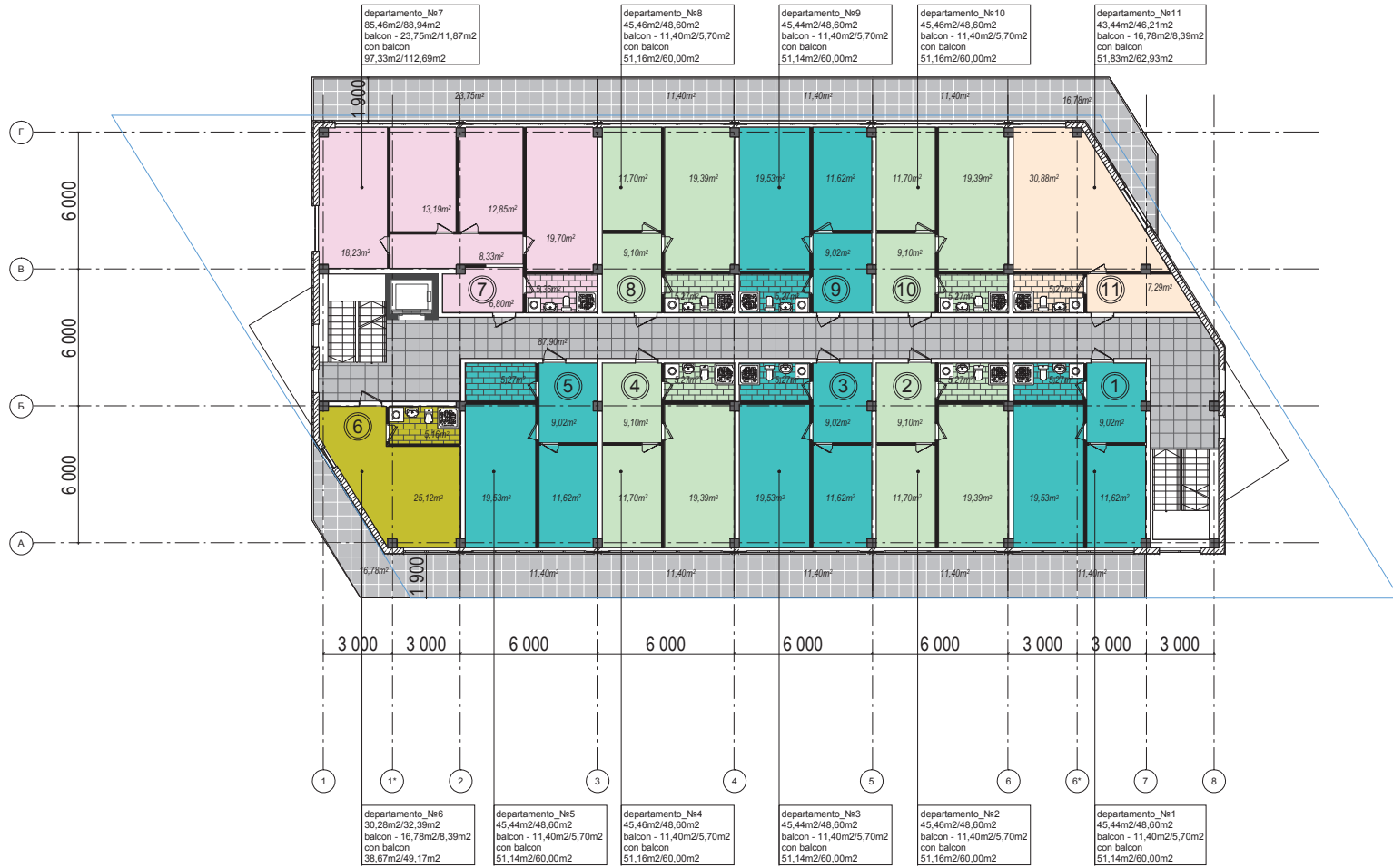
Planta baja Escala 1:200



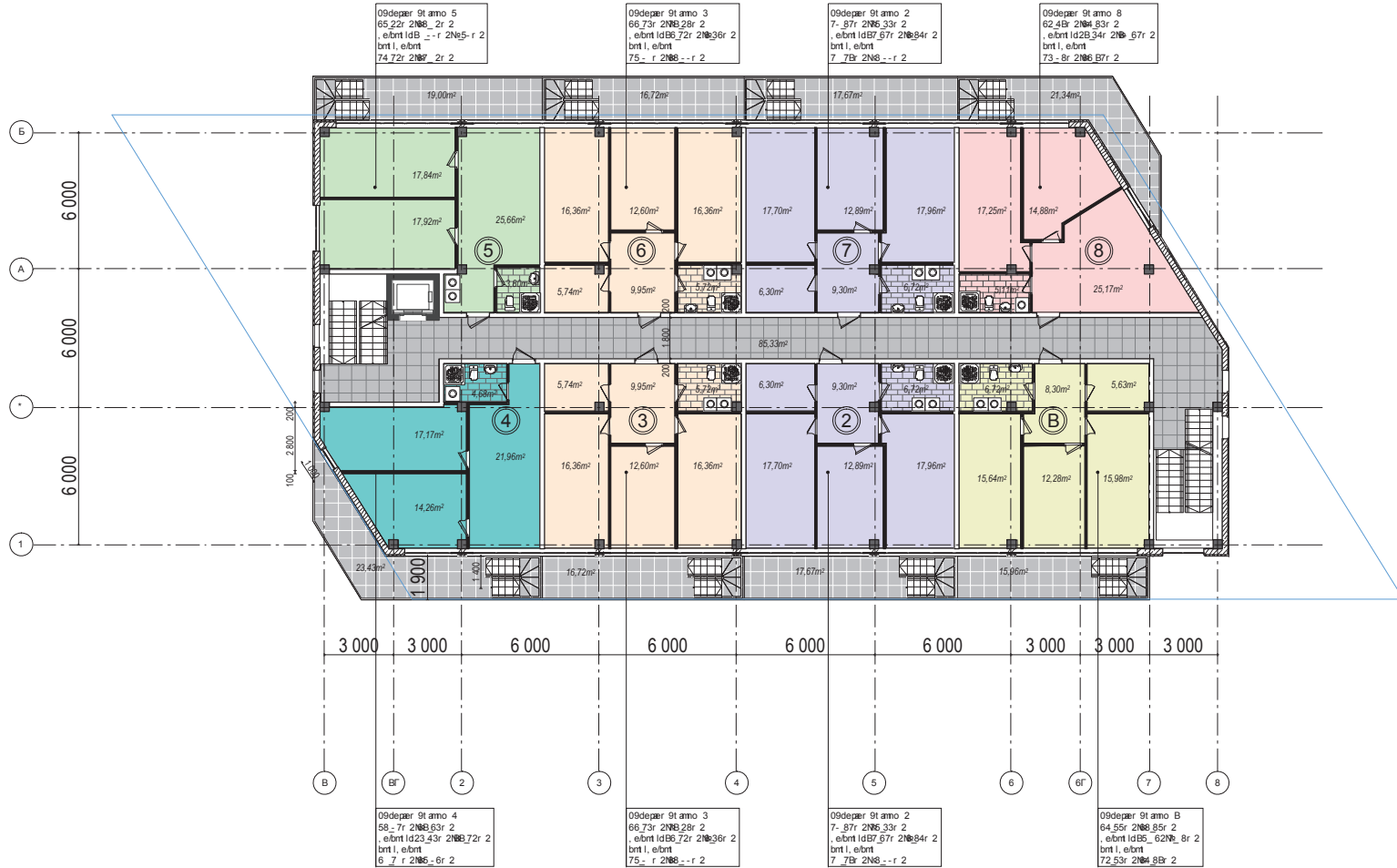
Numero total de apartamentos - 29
 Area total de apartamentos - 1517,95 m²/1619,92m²
 con balkon - 1736,26 m²/1916,94 m²
 Terraza en la azotea - 563,13 m²/281,57 m²
 Plazas de aparcamiento - 18
 Superficie de paso - 473,66 m²
 Area de via - 229,54 m²
 Area de construccion - 721,65 m²

Общее количество квартир - 29
 Общая площадь квартир - 1517,95 м²/1619,92 м²
 с балконами - 1736,26 м²/1804,25 м²
 Террасы на кровле - 563,13 м²/281,57 м²
 Паркомест - 18
 Площадь проездов - 473,66 м²
 Площадь дорожек - 229,54 м²
 Площадь застройки - 721,65 м²

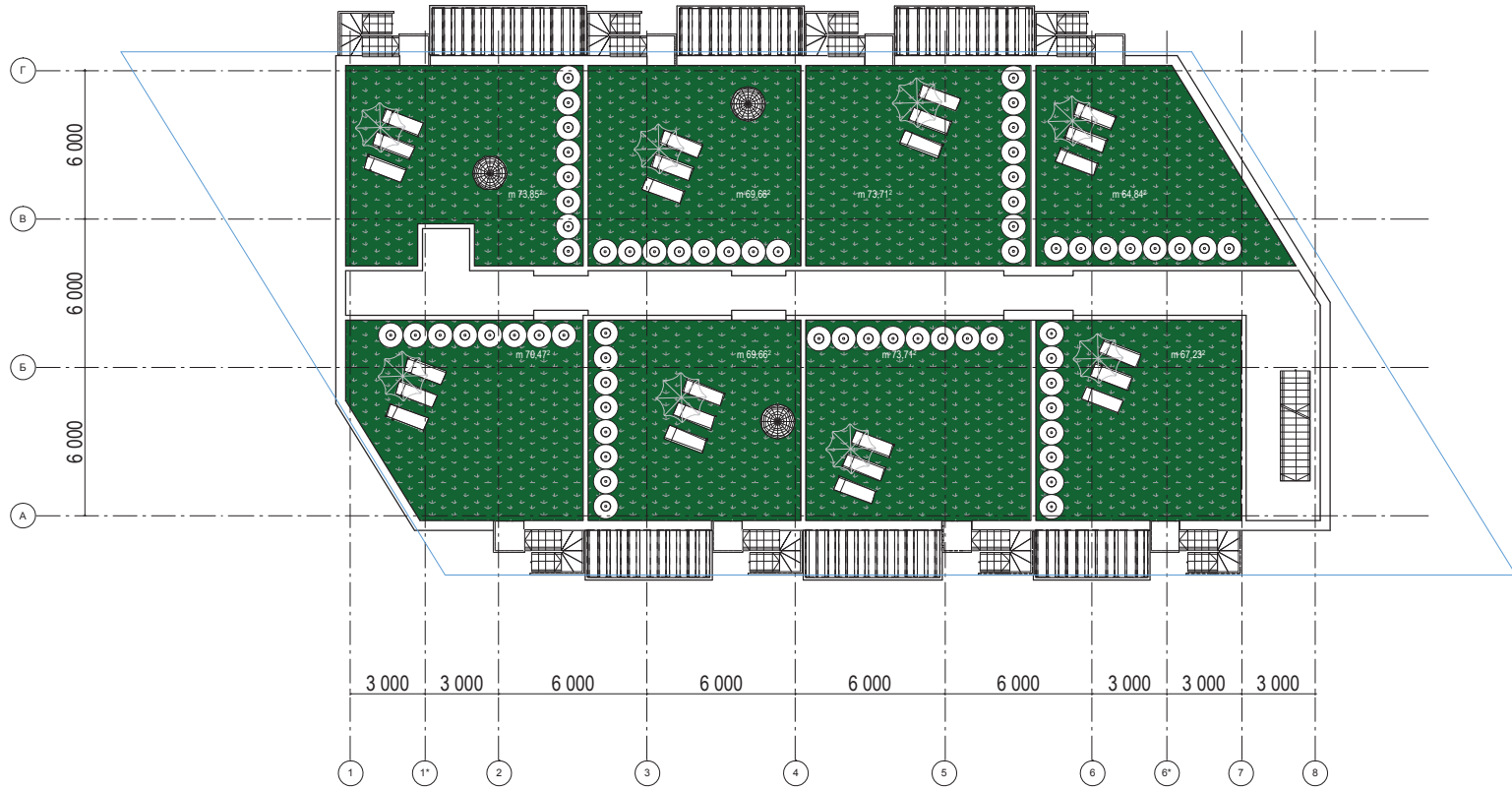
Plan en marca 3.200 escala 1:200



P/et 19t lr eþel6.4 - lsbe/eIB:2 -



Plan en marca 9.600 escala 1:200



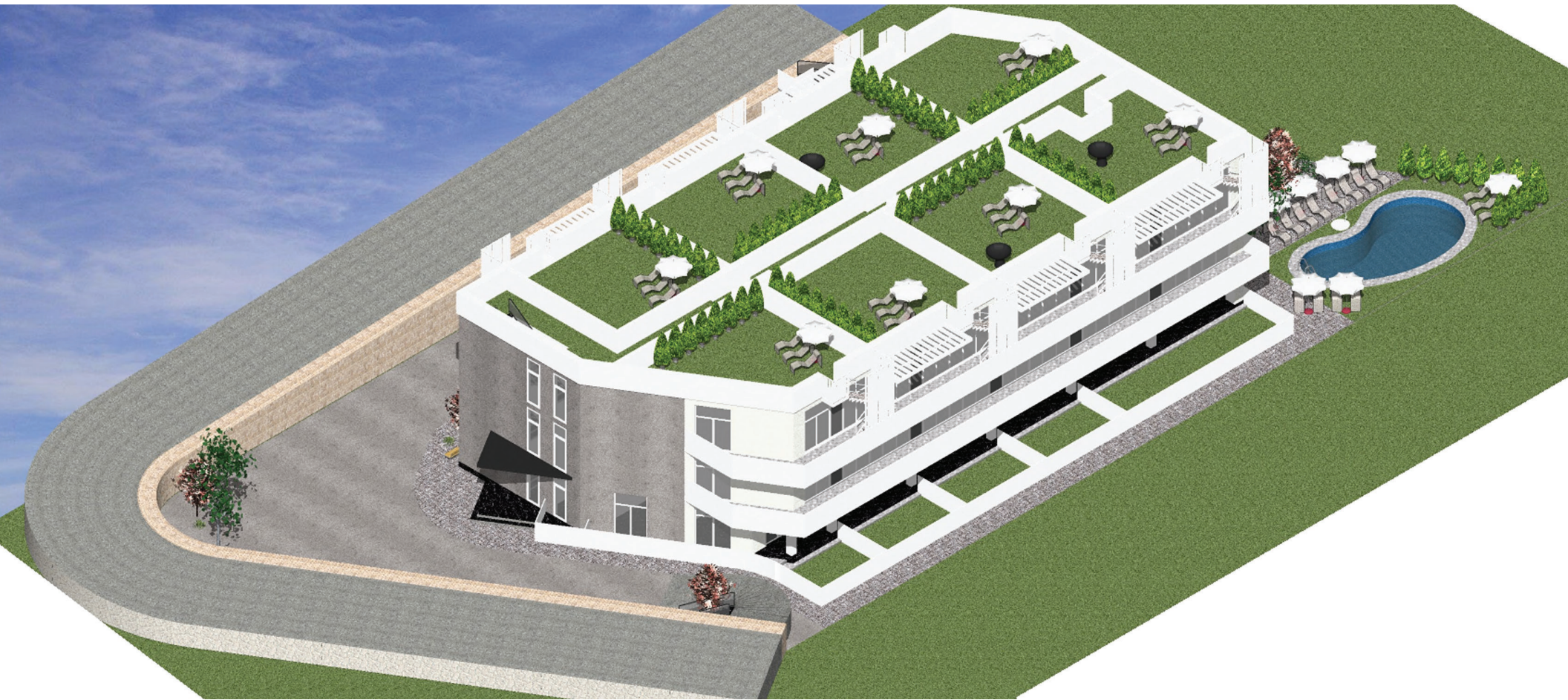














	September-24	October-24	November-24	December-24	January-25	February-25	March-25	April-25	May-25	June-25	July-25	August-25	September-25	October-25	November-25	December-25	January-26	February-26	March-26	April-26	May-26	June-26	July-26	August-26	September-26	October-26	November-26	December-26	January-27	February-27	March-27	April-27	May-27	June-27	
Advance payments from customers	Yes	Yes	Yes	Yes	Yes																														
Receipt of the invoice and payment of the license						Yes	Yes																												
Payment of 20% of the apartment's price upon license provision								Yes																											
Monthly payments over 24 months									Yes	Yes	Yes	Yes	Yes	Yes	Yes	Yes	Yes	Yes	Yes	Yes	Yes	Yes	Yes	Yes	Yes	Yes	Yes	Yes	Yes	Yes	Yes	Yes	Yes	Yes	
Completion of the construction and registration of property ownership																																	Yes	Yes	

